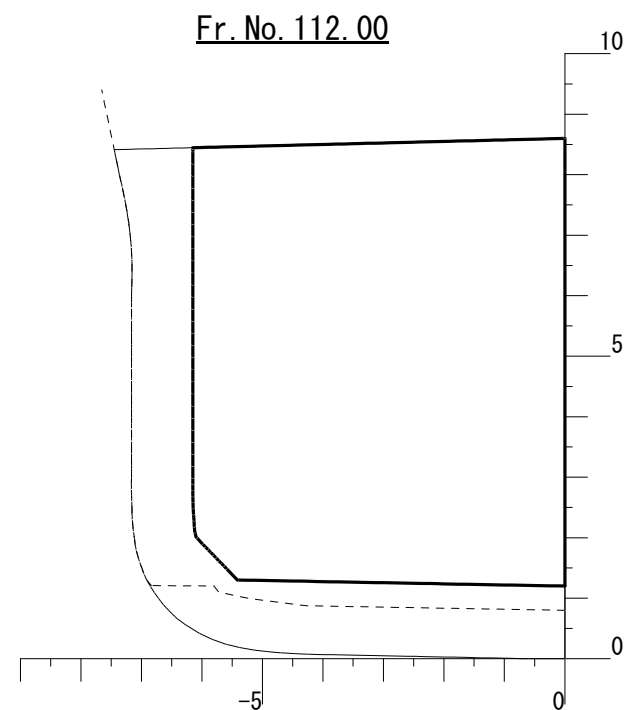


ACCIDENTAL OIL OUTFLOW PERFORMANCE

TANK NAME	98% FULL	OMB	OMS	O M
No. 1 CARGO TANK (P)	390.00	4.19	1.40	0.0005
No. 1 CARGO TANK (S)	390.00	4.19	12.99	0.0012
No. 2 CARGO TANK (P)	539.88	5.54	0.00	0.0005
No. 2 CARGO TANK (S)	539.88	5.54	18.69	0.0017
No. 3 CARGO TANK (P)	661.14	5.76	0.00	0.0006
No. 3 CARGO TANK (S)	661.14	5.76	23.90	0.0021
No. 4 CARGO TANK (P)	541.69	3.24	0.00	0.0003
No. 4 CARGO TANK (S)	541.69	3.24	17.29	0.0014
No. 5 CARGO TANK (P)	619.83	2.86	0.00	0.0003
No. 5 CARGO TANK (S)	619.83	2.86	21.50	0.0016
No. 6 CARGO TANK (P)	387.17	1.23	0.00	0.0001
No. 6 CARGO TANK (S)	387.17	1.23	10.81	0.0008
C = 6271.90			Total	0.0111
			Limit	0.0150

DETAIL OF No. 1 CARGO TANK (P)

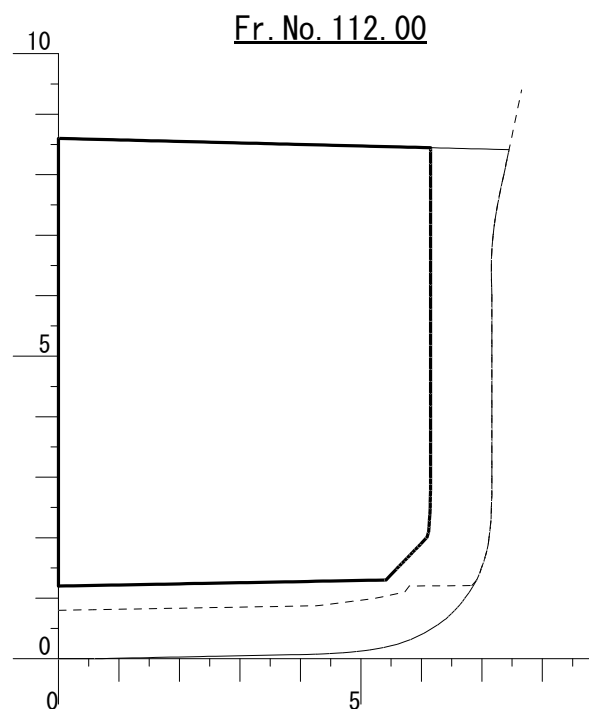
98% FULL VOLUME		(m ³)	390.00	-
R A N G E	LONG	FORE (m)	88.70	-
	(from AP)	AFT (m)	78.26	-
	VERT. (above BL)	UPP (m)	8.40	-
		LOW (m)	1.20	-
	TRANS. (off s_most)	PORT (m)	14.15	-
		STBD (m)	8.00	-
z	(m)	1.20	-	
CDB	(m)	0.60	-	
Hw	(m)	0.79	-	
A (Hor. Project Area)	(m ²)	49.11	-	
YB	(m)	1.01	-	
y	(m)	4.20	-	
OMB			4.19	-
PBa	(Xa/L)	0.4008	(0.7937)	
PBf	(Xf/L)	0.0897	(0.8996)	
PBp	(Yp/Bb)	0.0417	(0.8844)	
PBs	(Ys/Bb)	0.3440	(0.5000)	
PBz	(z/Ds)	0.8271	(0.1429)	
OB (0)	(HF)	2.85	(6.1882)	
OB (2.5)	(HF)	7.33	(3.4187)	
OMS			1.40	-
PSa	(Xa/L)	0.7607	(0.7937)	
PSf	(Xf/L)	0.0684	(0.8996)	
PSu	(Zu/Ds)	0.0000	(1.0000)	
PSI	(ZI/Ds)	0.0027	(0.1429)	
PSy	(Y/Bs)	0.9790	(0.2625)	
OM			0.0005	-



S H I P ' S D I M E N S I O N S				
LENGTH [L] (m)	98.600	DRAFT (m)	FULL [ds]	6.786
BREADTH[B] (m)	16.000		D/W [t]	5803.14
DEPTH [Ds] (m)	8.400		INERT. G[kPa]	0.00
BOUNDARY	[h]	0.80	LIGHT [dLW]	2.270
	(m) [w]	0.00	DB	2.520
		BREADTH (m)	Bs	16.000
			Bp	16.000

DETAIL OF No. 1 CARGO TANK(S)

98% FULL VOLUME		(m ³)	390.00	-
R A N G E	LONG	FORE (m)	88.70	-
	(from AP)	AFT (m)	78.26	-
	VERT. (above BL)	UPP (m)	8.40	-
		LOW (m)	1.20	-
	TRANS. (off s_most)	PORT (m)	8.00	-
		STBD (m)	1.86	-
z	(m)	1.20	-	
CDB	(m)	0.60	-	
Hw	(m)	0.79	-	
A (Hor. Project Area)	(m ²)	49.11	-	
YB	(m)	1.01	-	
y	(m)	1.00	-	
OMB			4.19	-
PBa	(Xa/L)		0.4008	(0.7937)
PBf	(Xf/L)		0.0897	(0.8996)
PBp	(Yp/Bb)		0.3440	(0.5000)
PBs	(Ys/Bb)		0.0421	(0.1163)
PBz	(z/Ds)		0.8271	(0.1429)
OB (0)	(HF)		2.85	(6.1882)
OB (2.5)	(HF)		7.33	(3.4187)
OMS			12.99	-
PSa	(Xa/L)		0.7607	(0.7937)
PSf	(Xf/L)		0.0684	(0.8996)
PSu	(Zu/Ds)		0.0000	(1.0000)
PSI	(ZI/Ds)		0.0027	(0.1429)
PSy	(Y/Bs)		0.8046	(0.0625)
OM			0.0012	-



S H I P ' S D I M E N S I O N S				
LENGTH [L] (m)	98.600	DRAFT (m)	FULL [ds]	6.786
BREADTH[B] (m)	16.000		D/W [t]	5803.14
DEPTH [Ds] (m)	8.400		INERT. G[kPa]	0.00
BOUNDARY	[h]	0.80	LIGHT [dLW]	2.270
	(m) [w]	0.00	DB	2.520
		BREADTH (m)	Bs	16.000
			Bp	16.000